

**GENERATOR ASSEMBLY  
REMOVAL AND INSTALLATION**

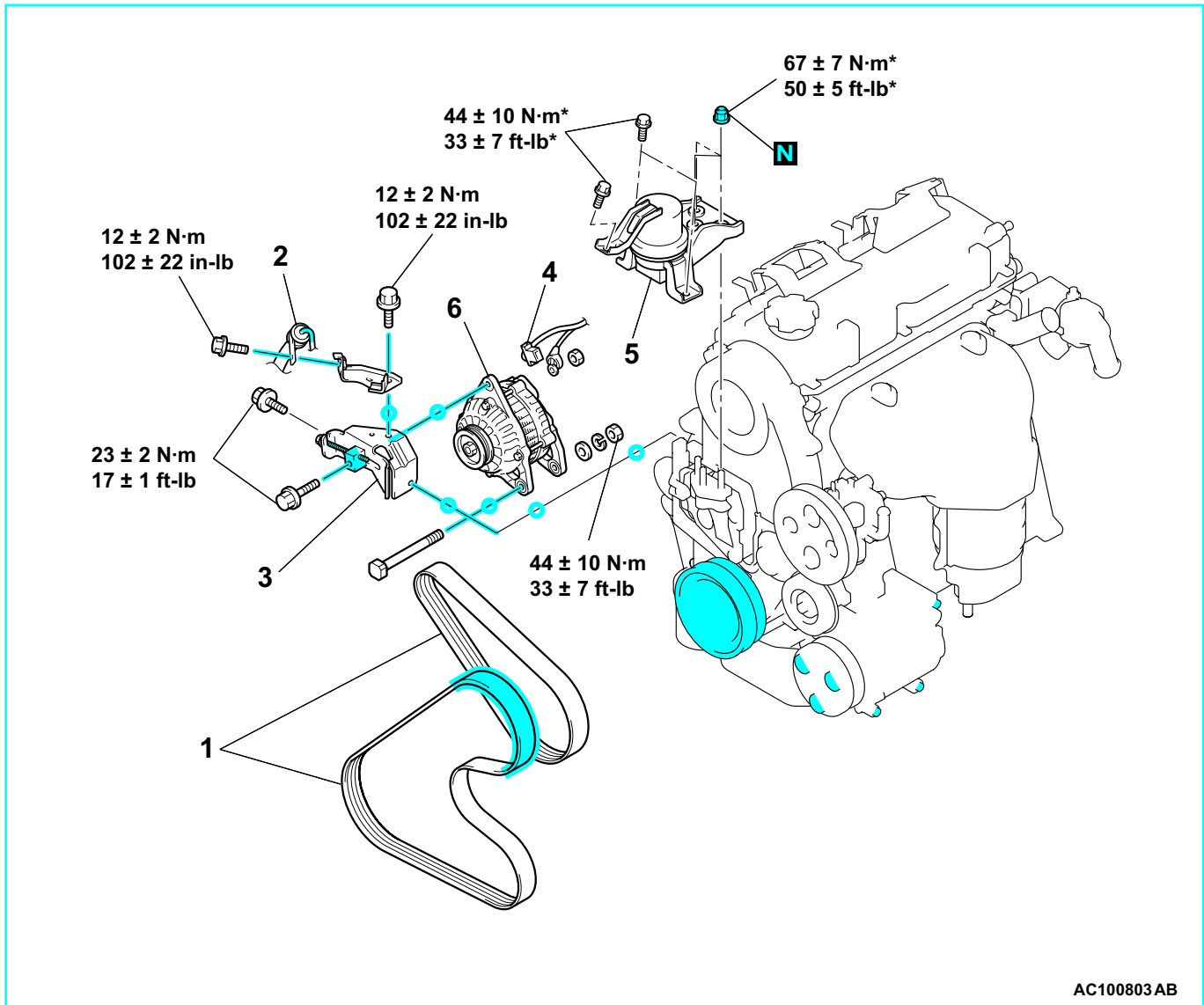
M1161001400333

**CAUTION**

\*: Indicates parts which should be initially tightened, and then fully tightened after placing the vehicle horizontally and loading the full weight of the engine on the vehicle body.

**Post-installation Operation**

- Drive Belt Tension Adjustment (Refer to GROUP 11A, On-vehicle Service P.11A-5.)



AC100803AB

**REMOVAL STEPS**

1. DRIVE BELT
2. POWER STEERING HOSE CLAMP
3. GENERATOR BRACE

<<A>>

**REMOVAL STEPS (Continued)**

4. GENERATOR CONNECTOR
5. ENGINE MOUNT <VEHICLES WITH ABS>
6. GENERATOR

**REMOVAL SERVICE POINT**

<<A>> ENGINE MOUNT <VEHICLES WITH ABS> REMOVAL

1. Remove all the power steering hose clamp mounting bolts.

TSB Revision